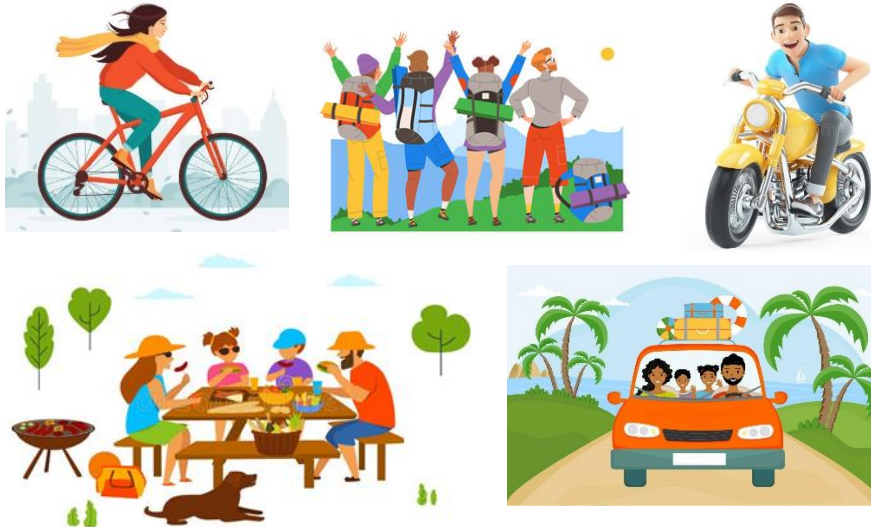


**PENSACOLA INTERSTATE FAIR, INC.  
AND  
PENSACOLA FEDERATION OF GARDEN CLUBS, INC.**

*Invite you to the 73rd NGC Standard Flower Show*



***"Let's Go ..."***



**October 15, 2025  
Open to the Public 4:00 to 10:00 p.m. October 16 - 25  
Pensacola Interstate Fairgrounds  
6655 Mobile Highway  
Pensacola, FL**

*Pensacola Interstate Fair, Inc., and  
Pensacola Federation of Garden Clubs, Inc.,  
member of Florida Federation of Garden Clubs, Inc.,  
and National Garden Clubs, Inc.*

*PRESENT*

***"Let's Go . . ."***

An NGC Standard Flower Show

Wednesday, October 15, 2025,

at

Pensacola Interstate Fairgrounds

6655 Mobile Highway

Pensacola, Florida

Free to the public with admission to the Fair

*Suzi Matteson, President, Pensacola Federation of Garden Clubs, Inc.  
Anne Collins, District I Director, Florida Flower Show Judges  
Betty White, District I Director, Florida Federation of Garden Clubs, Inc.  
Christy Linke, President, Florida Federation of Garden Clubs, Inc.  
Donna Donnelly, President, National Garden Clubs, Inc.*

# TABLE OF CONTENTS

Flower Show Committee .....	1
General Rules.....	2
NGC Top Exhibitor Awards.....	3
Horticulture Division Awards.....	3
Design Division Awards.....	4
Botanical Arts Division Awards .....	4
Local and Special Awards .....	5
<b>DIVISION I: Horticulture</b>	
Rules .....	6
Horticulture Scales of Points .....	7
Display Scales of Points.....	7
Sample Entry Form .....	8
Section A - Cut Flowers from Annuals.....	9
Section B – Cut Flowers from Perennials.....	9
Section C – Cut Decorative Annual and Perennial Foliage .....	9-10
Section D – Roses, Cut Specimens .....	10
Section E – Arboreal: Cut Flowering Branches.....	10
Section F – Arboreal: Cut Foliage Branches .....	10
Section G – Arboreal Branches Berried, Coned, or Fruited .....	10
Section H –Fruits, Vegetables and Nuts .....	10-11
Section I – Container Grown Flowering Plants .....	11
Section J – Container Grown Foliage Plants .....	11
Section K – Hanging Baskets .....	11
Section L – Collections.....	11
Section M – Displays .....	11
<b>DIVISION II: Design</b>	
Rules .....	12
Design Scale of Points .....	13
Design Sections A-C.....	13-14
<b>DIVISION III: Botanical Arts</b>	
Rules .....	15
Scale of Points.....	15
Botanical Arts Sections A-C.....	15-17
<b>DIVISION IV: Education</b>	
Education Rules – Non-competitive .....	18
Exhibits 1-6.....	18

## Flower Show Committee Chairmen

Flower Show Chair .....	Deanna Gordon 850-293-1540
Co-Chair.....	Nancy Huhn 850-477-4290
Awards .....	Deanna Gordon 850-293-1540 Nancy Huhn 850-477-4290
Clerks/Ribbons.....	Marilyn Powitzky 850-995-9178
Design and BA Divisions Reservations and Conformance .....	Gina Jogan 850-324-9783
Education Division.....	Deanna Gordon 850-293-1540
Entries .....	Christine Ketnick 850-217-7762 Glenda Young 850-377-7989
Flower Show Schedule .....	Deanna Gordon 850-293-1540 Nancy Huhn 850-477-4290 Gina Jogan 850-324-9783 Judy Keliher 850-525-4623 Tina Tuttle 850-341-2361
Horticulture Division and Classification .....	Tina Tuttle 850-341-2361
Horticulture Placement .....	Classification
Hospitality.....	Dolores Quigley 850-492-2118 Kristi Vanderburg 850-712-9110
Hosts/Hostesses.....	Gigi Massingill 912-270-3078
Judges .....	Judy Keliher 850-525-4623
Judges' Luncheon .....	Karan Llewellyn 402-320-4458
Properties/Staging .....	Bryan Gaston 850-501-6928
Roses.....	Gail Pisz 850-549-6417
Signage.....	Nancy Huhn 850-477-4290
Tabulation.....	Suzanne Wagg 850-438-3783

## GENERAL RULES

### GENERAL RULES

1. This flower show conforms to the standards established by National Garden Clubs, Inc. (NGC). The *Handbook for Flower Shows*, (HB) 2017 Edition with revisions published online in *The National Gardener* magazine (TNG) is the authority for all issues not covered by the Schedule, which is the Law of the Show.
2. Entries are **open to all amateur gardeners and designers**.
3. All entries will be received Wednesday, October 15, 2025, between **7:00 and 10:30 a.m.** All exhibits must be in place and all exhibitors off the floor by 10:30 a.m.
4. Pre-registration required for Division I, Sections L and M; Division II, all classes; and Division III, Classes 4-9. Designs should be ready to be placed, not constructed on site. Designers not present by 10:15 a.m. will be considered “NO SHOWS” and their exhibits excluded from judging.
5. All horticulture entries in containers must be removed Sunday, October 26, beginning at **8:00 a.m.** (Cut horticulture specimens will be discarded.) Designs **MUST** be removed on Sunday, October 26, by **10:00 a.m.**; if not, the committee will move them to a safe place so that clean-up can be completed.
6. Design Entry Cards are filled out in advance by committee. Horticulture Entry Tags may be obtained from show Chair upon request. Exhibitor to fill in with pencil the date, division, binomial name (genus and specific epithet) with assistance in plant identification from Classification, optionally common name, exhibitor’s name (labels may be used on all copies), and address or garden club.
7. **Judging will begin at 1:00 p.m. on Wednesday, October 15.**
8. All **horticulture exhibits must be processed** by the Classification Committee. This committee may disqualify any entry not conforming to the schedule, or which cannot be made to conform, or any entry which is of inferior quality; however, these may be displayed for educational purposes.
9. The Show, Divisions, and Judges chairmen are available during judging for possible consultations. The Committee, along with the judges, clerks, hospitality staff, and tabulation staff are the only personnel allowed on the floor during judging.
10. The decisions of the judges are final. Awards may be withheld if not merited.
11. There must be emphasis on FRESH plant material. No artificial plant material is permitted in any exhibit in any division.
12. Each exhibitor is limited to one entry per class, except in the Horticulture Division and the Botanical Arts Horticulture Section.
13. Specific rules are listed with each Division in the schedule and must be followed.
14. The Pensacola Federation of Garden Clubs, Inc., and the Pensacola Interstate Fair, Inc., will strive to assure the safety of all items after arrival and placement, but are not responsible for any loss or damage to exhibits.
15. Native plants may be entered provided such plants have been legally obtained and grown by the exhibitor for at least 90 days. The use of plant material classified as Federal Noxious Weeds is prohibited ([aphis.usda.gov](http://aphis.usda.gov)). The use of plant material on Florida’s Federally Listed Plant Species as endangered or threatened is prohibited ([fdacs.gov](http://fdacs.gov)). The use of invasive plant material is prohibited ([floridainvasivespecies.org](http://floridainvasivespecies.org)).
16. **The show will be open to the public at 4:00 p.m. when the Fair opens on Thursday, October 16. The date October 15 is being used in this schedule as the day for submitting entries and judging.**

## GENERAL RULES

### NGC TOP EXHIBITOR AWARDS

The NGC Standard System of Awarding is used in all divisions.

- a. Only one (1) first place (blue) ribbon per class or subclass, scoring 90 or above;
- b. Only one (1) second place (red) ribbon per class or subclass, scoring 85 or above;
- c. Only one (1) third place (yellow) ribbon per class or subclass, scoring 80 or above;
- d. One (1) or more honorable mention (white) ribbons as merited, scoring 75 or above.

Top Exhibitor Awards listed may be offered and awarded if merited.

### REQUIREMENTS FOR NGC HORTICULTURE DIVISION TOP EXHIBITOR AWARDS

1. All plant material must be cut or container grown.
2. Exhibit must be a blue-ribbon winner scoring 95 or more points. Eligible horticulture exhibits will be placed on the Awards table.
3. Exhibit must be correctly named with genus and specific epithet, cultivar/variety if available; common name may be added.
4. Plant material must be in possession of the individual exhibitor for the required length of time: 90 days for annuals, bulbs, houseplants, herbaceous perennials, vegetables and fruits; 6 weeks growing together for combination plantings except troughs; 6 months for arboreal specimens and for plants growing together in troughs (HB p. 55 & 91).
5. There must be at least three classes in each designated section. There is no minimum number of exhibits per class required except that the total number must meet requirements for a Standard Flower Show (at least 20 horticulture exhibits in all).
6. Sections/classes eligible for each award must be listed in the schedule.
7. An award must be withheld if no exhibit is worthy and/or fails to meet specific requirements for the award.

### HORTICULTURE DIVISION AWARDS

1. **Award of Horticultural Excellence (HB p. 40)** One is offered to the highest scoring, correctly named, blue-ribbon winner, scoring 95 or above, in the entire Horticulture Division determined by ballot from all judges. Rosette of green, orange, and blue ribbons
2. **Awards of Merit (HB p.41)** Four are offered to the highest scoring, correctly named, blue-ribbon winners, scoring 95 or above, meeting all section requirements in Sections A, B, C, and H. Rosette of orange ribbons
3. **Arboreal Awards (HB p.40-41)** Three are offered to the highest scoring, correctly named, blue-ribbon winners, scoring 95 or above, meeting all section requirements in Sections E, F, and G. Rosette of green ribbons
4. **Grower's Choice Awards (HB p.41)** Three are offered to the highest scoring, correctly named, blue-ribbon winners, scoring 95 or above, meeting all section requirements in Sections I, J, and K. Rosette of dark green ribbons
5. **Collector's Showcase Award - Collections (HB p.41, p.60)** One is offered to the highest scoring, correctly named, blue-ribbon winner, scoring 95 or above, meeting all section requirements in Section L. Rosette of brown and green ribbons

## GENERAL RULES

6. **Club Competition Award (HB p. 43) for Displays** One is offered to the highest scoring, blue-ribbon exhibit, scoring 95 or above by a club, in Division I, section M. Minimum of four entries in one class. The Pensacola Interstate Fair, Inc., generously offers cash prizes to the clubs in this class. Rosette of light blue ribbons

### REQUIREMENTS FOR NGC DESIGN DIVISION TOP EXHIBITOR AWARDS

1. Exhibit must be a blue-ribbon winner scoring 95 or more points.
2. Schedule must designate award's special requirements, classes eligible, and number of exhibits required per class.
3. There must be a minimum of three classes with at least four exhibits in each class (twelve designs) for each award offered.
4. No section can be eligible for more than one Top Exhibitor Design Award.
5. All general and design award requirements must be met for each award offered. Judges must withhold award if no exhibit meets the requirements. Club Competition is not eligible for these awards.

### DESIGN DIVISION AWARDS

1. **Petite Award (HB p. 43)** One is offered to the highest scoring blue-ribbon winner, scoring 95 or above, entered by an individual, meeting all section requirements in Section A, Classes 1, 2, and 3, determined by ballot from judges who comprised the assigned panel(s). Minimum 4 exhibits per class. Small rosette of blue and white ribbons
2. **Designer's Choice Award (HB p. 42)** One is offered to the highest scoring blue-ribbon winner, scoring 95 or above, entered by an individual, meeting all section requirements in Section B, Classes 4, 5, and 6, determined by ballot from judges who comprised the assigned panel(s). Minimum 4 exhibits per class. Rosette of purple ribbons
3. **Table Artistry Award (HB p. 43)** One is offered to the highest scoring blue-ribbon winner, scoring 95 or above, entered by an individual, meeting all section requirements in Section C, Classes 7, 8, and 9, determined by ballot from judges who comprised the assigned panel(s). Minimum 4 exhibits per class. Rosette of burgundy ribbons

### BOTANICAL ARTS TOP EXHIBITOR AWARDS – SECTION AWARDS

1. **Botanical Arts Horticulture Award (HB p. 44)** One is offered to the highest scoring, correctly named, blue-ribbon winner, scoring 95 or above, meeting all section requirements in Section A, Classes 1, 2, and 3; minimum of 12 exhibits is required. Rosette of light brown ribbons
2. **Botanical Arts Design Award (HB p. 44)** One is offered to the highest scoring, correctly named, blue-ribbon winner, scoring 95 or above, meeting all section requirements in Section B, Classes 4, 5, and 6; minimum of 12 exhibits is required. Rosette of yellow and orange ribbons
4. **Botanical Arts Artistic Crafts Award (HB p. 44)** One is offered to the highest scoring blue-ribbon winner, scoring 95 or above, entered by an individual, meeting all section requirements in Section B, Classes 7, 8, and 9. Minimum 4 exhibits per class. Rosette of navy-blue ribbons

## GENERAL RULES

### LOCAL AND SPECIAL AWARDS

1. **Judges' Choice Award** One is offered to the finest exhibit in the entire Design Division as determined by ballot from all judges. Winning exhibit must have won a section Top Exhibitor Award in the Design Division. Rosette of brown/teal ribbons
2. **Rose Award** One is offered to the highest scoring blue-ribbon winner, scoring 95 or above, meeting all section requirements in Section D, Classes 82-89. Rosette of rainbow-colored ribbons
3. **Sweepstakes Award-Design (HB p. 46)** Three are offered to the clubs winning the most, second-most, and third-most blue ribbons in the Design Division. In case of a tie, red ribbons will be counted. Winners are determined by the Tabulation Committee. It is a rosette of green/white ribbons. The Pensacola Interstate Fair, Inc., generously offers a cash prize to the top 3 clubs.
4. **Sweepstakes Award-Horticulture (HB p. 46)** Three are offered to the clubs winning the most, second-most, and third-most blue ribbons in the Horticulture Division. In case of a tie, red ribbons will be counted. Winners are determined by the Tabulation Committee. It is a rosette of green/white ribbons. The Pensacola Interstate Fair, Inc., generously offers a cash prize to the top 3 clubs.
5. **Sweepstakes Award-Botanical Arts (HB p. 46)** Three are offered to the clubs winning the most, second-most, and third-most blue ribbons in the Botanical Arts Division. In case of a tie, red ribbons will be counted. Winners are determined by the Tabulation Committee. It is a rosette of green/white ribbons. The Pensacola Interstate Fair, Inc., generously offers a cash prize to the top 3 clubs.
5. **Individual Sweepstakes Award** One is offered to the individual winning the most blue ribbons in the Horticulture Division. In case of a tie, red ribbons will be counted. Winner is determined by the Tabulation Committee. It is a rosette of green/white ribbons.



## DIVISION I - HORTICULTURE

### DIVISION I – HORTICULTURE

#### HORTICULTURE RULES

1. All horticulture specimens must be **fresh plant materials grown by the exhibitor.**
2. All classes are open to amateur gardeners.
3. **RESERVATIONS are necessary for** Collections and Club Competition Displays. Please contact show chair Deanna Gordon at [dkwgordon@gmail.com](mailto:dkwgordon@gmail.com) or (850) 293-1540 to enter a collection or display.
4. All entries must be checked by Classification Committee and must **conform to the schedule regulations.** All entries are to be labeled by genus and specific epithet and/or variety or patented/trademarked names. Common name may also be given.
5. Exhibitor may enter more than one specimen per class or subclass if each entry is a different genus, specific epithet, cultivar, variety, type, size, or color.
6. Classification Chairman has the authority to subdivide classes by color, type, cultivar, etc., as necessary. Judges do not subdivide but should approach the Classification Chair to do so if they perceive a need.
7. Clear containers for fresh cut plant materials and paper plates for fruits, nuts, and vegetables will be provided by the committee.
8. There should be no foliage below the water line on cut specimens except *Gladiolus*.
9. Wedging materials, if needed, will be furnished by the committee. No anchoring is allowed.
10. No oiling, dressing of foliage, or wiring on cut specimens or container grown specimens is allowed unless actively growing on the support.
11. Size requirements accompany every section description in the schedule; refer to pp. 9-11. Any entry may be refused by classification; alternative placement may be allowed if space is available. Stem should be in proportion to the flower.
12. Cut flowers or cut decorative foliage should be one stem unless otherwise indicated in the schedule.
13. Specific sections and classes in horticulture may have restrictions for entering. Please check the schedule.
14. Reference for horticulture entries will be the *Southern Living Garden Book*.
15. Plants, cut or container grown, must have been in the exhibitor's possession 90 days, combinations growing together for 6 weeks, arboreal for 6 months, annuals to maturity. (HB p. 55)
16. Specimens that do not conform to schedule regulations may be accepted for display for the edification of the public but will not be judged.

#### CONTAINER PLANTS and HANGING BASKETS

1. **Containers for foliage and flowering plants**, preferably of clay or black plastic, **MAY NOT EXCEED 12"** in diameter or height. **Hanging Baskets** may not exceed 18" in diameter or height. Weight limit for all containers is 20 lbs. No double potting. Container-grown exhibits must have been in **the exhibitor's possession for at least 90 days.**
2. No accessories are allowed in containers: no props, sticks, wires, ties, etc., unless actively growing on the support. If the plant naturally vines, a trellis is permitted.
3. Hydroponically grown exhibits will not be accepted.

**All horticulture specimens will be received October 15 from 7:00 to 10:30 a.m.**

**All entries must be on the classification table by 10:30 AM.**

**NO LATE ENTRIES WILL BE ACCEPTED.**

## DIVISION I - HORTICULTURE

### SCALES OF POINTS FOR JUDGING HORTICULTURE

All Cut or Container-Grown Horticulture Specimens and Collections  
(Arboreal, Flowering, Foliage, Fruit/Vegetable/Nuts)

<b>Conformance</b>	5
<b>Plant Identification</b>	5
<b>Peak of Perfection</b>	
Form	20
Color	20
Maturity/Size	20
Condition/Blemishes	15
<b>Grooming and Staging</b>	
Grooming	10
Staging	5
<b>Total</b>	100

### SCALES OF POINTS FOR JUDGING DISPLAYS

<b>Conformance</b>	5
<b>Plant Identification</b>	5
<b>Labeling</b>	5
<b>Grooming</b>	5
<b>Peak of Perfection</b>	
Form	10
Color	10
Maturity/Size	10
Condition	10
<b>Design Principles</b>	30
<b>Creative/Distinctive</b>	10
<b>Total</b>	100

**DIVISION I - HORTICULTURE**

**Entry Form**

<b>1<sup>st</sup></b>	<b>2<sup>nd</sup></b>	<b>3<sup>rd</sup></b>	<b>HM</b>	<b>90+</b>
<input type="checkbox"/>	<input type="checkbox"/>	<input type="checkbox"/>	<input type="checkbox"/>	<input type="checkbox"/>

Award Seal  
Here

Date: \_\_\_\_\_

Judge's  
Signature: \_\_\_\_\_

Standard Flower Show Entry

Division: \_\_\_\_\_ Section: \_\_\_\_\_

Class: \_\_\_\_\_

Genus/Specific Epithet: \_\_\_\_\_

\_\_\_\_\_

Common Name: \_\_\_\_\_

\*\*\*\*\*FOLD HERE\*\*\*\*\*

Exhibitor's Name: \_\_\_\_\_

Address: \_\_\_\_\_

Garden Club: \_\_\_\_\_

## DIVISION I - HORTICULTURE

### “Let’s Go Plant Crazy”

#### SECTION A. “Let’s Go Pick a Posy” CUT FLOWERS FROM ANNUALS

Enter one stem or spray unless otherwise noted. Foliage SHOULD be included ONLY IF it grows on the stem. Stem should be in good proportion to bloom. **Specimen should be cut as long as possible (preferably 8”-10”) but NO LONGER than 24”.**

*Eligible for an Award of Merit.*

- Class 1. *Ageratum houstonianum* (“Floss Flower”)
- Class 2. *Asclepias curassavica* (“Milkweed”)
- Class 3. *Catharanthus roseus* (syn. “Vinca”)
- Class 4. *Celosia* (“Cockscomb”)
- Class 5. *Cleome hasslerana* (“Spider Flower”)
- Class 6. *Coreopsis* (“Tickseed”)
- Class 7. *Datura metel* (“Angel’s Trumpet,” upright)
- Class 8. *Gaillardia* (“Blanket Flower”)
- Class 9. *Helianthus* (“Sunflower”)
- Class 10. Herbs
- Class 11. *Impatiens* – 1 spray
- Class 12. *Petunia x hybrida*
- Class 13. *Phlox drummondii* - 1 spray
- Class 14. *Salvia coccinea*
- Class 15. *Tithonia rotundifolia* (“Mexican Sunflower”)
- Class 16. *Tagetes* (“Marigold”)
- Class 17. *Zinnia*
- Class 18. Any other worthy specimen

#### SECTION B. “Let’s Go Pick a Bloom” CUT FLOWERS FROM PERENNIALS

**Specimen should be cut as long as possible (preferably 8”-10”) but NO LONGER than 24”.**

*Eligible for an Award of Merit*

- Class 19. *Achillea millefolium* (“Yarrow”)
- Class 20. Aroids
- Class 21. *Aster patens* (“Late Purple Aster”)
- Class 22. *Bougainvillea* spp.
- Class 23. *Camellia japonica* (shown with 2 leaves)
- Class 24. *Canna x generalis* (“Canna”)
- Class 25. *Chrysanthemum* spp.
- Class 26. *Clematis*
- Class 27. *Clerodendrum* (see also Class 97)
- Class 28. *Crinum bulbispermum* (“Hardy Crinum”)
- Class 29. *Echinacea purpurea* (“Cone Flower”)
- Class 30. *Gerbera jamesonii* (“Gerbera Daisy”)
- Class 31. Gingers
- Class 32. *Gloriosa superba* ‘Rothschildiana’ (“Glory Lily”)
- Class 33. *Gloxinia*
- Class 34. Herbs
- Class 35. *Justicia* spp.
- Class 36. *Lonicera sempervirens* (“Woodbine,” “Red Honeysuckle”)
- Class 37. Orchids
- Class 38. *Pachystachys lutea* (“Yellow Shrimp Plant”)

Class 39. *Pentas lanceolata*

Class 40. *Phlox paniculata* (“Summer Phlox”)

Class 41. *Rudbeckia* spp.

Class 42. *Salvia* spp. (not Class 16 *coccinea* or 149 *rosmarinus*)

Class 43. *Tricyrtis hirta* (“Toad Lily”)

Class 44. Any other worthy specimen

#### SECTION C. “Let’s Go Decorative” CUT DECORATIVE ANNUAL AND PERENNIAL FOLIAGE

**Specimen no less than 10” and no longer than 24”.**

The committee will not accept specimens which are oversized or unstable (Elephant Ear, Sago Palm, Banana, Nandina, Rice Paper, Selloum, Aloes, Yucca, etc.).

*Eligible for an Award of Merit*

Class 45. *Acalypha*

Class 46. *Aglaonema*

Class 47. *Artemisia* (“Powis Castle”)

Class 48. *Asparagus* spp. (not *A. oerthiopicus* or ‘Sprengeri’)

Class 49. *Aspidistra* (“Cast Iron Plant”)

Class 50. *Begonia* (by type)

Class 51. *Caladium bicolor*

Class 52. *Calathea* spp.

Class 53. *Coleus scutellaroides*

Class 54. *Cordyline* spp. (“Ti Plant”)

Class 55. *Cyperus* (“Umbrella Palm”, “Papyrus”)

Class 56. *Dracaena* (other than *Sansevieria*, Class 74)

Class 57. *x Fatshedera lizei* (“Tree Ivy”)

Class 58. *Fatsia japonica*

Class 59. Ferns

Class 60. *Hedera* (Ivy)

Class 61. Herbs

Class 62. *Hypoestes phyllostachys* (“Freckle Face”)

Class 63. *Pedilanthus tithymalloides* (syn. *Euphorbia tithymalloides*) (“Devil’s Backbone”)

Class 64. *Peperomia* spp.

Class 65. *Philodendron* spp.

Class 66. *Pilea cadierei* (“Aluminum Plant”)

Class 67. *Plectranthus* (not *Coleus*)

Class 68. *Pothos aureum* (syn. *Epipremnum*) (“Devil’s Ivy”)

Class 69. *Rhoeo spathacea* (syn. *Tradescantia spathacea*) (“Moses in the Cradle”)

Class 70. *Salaginella* (Fern ally)

Class 71. *Sansevieria* spp. (syn. *Dracaena*)

Class 72. *Senecio* spp.

Class 73. *Spathiphyllum* (“Peace Lily”)

Class 74. *Strobilanthes dyeanus* (“Persian Shield”)

Class 75. *Syngonium podophyllum* (syn. *Nepthytis*) (“Arrowhead”) cultivated varieties only

Class 76. *Tradescantia* (“Wandering Jew”)

Class 77. *Zamia*

## DIVISION I - HORTICULTURE

Class 78. Any other worthy specimen

### SECTION D. "Let's Go Rosy" ROSES, CUT SPECIMENS

Roses to be shown with at least two (2) sets of leaflets.

**Specimen no less than 10" and no longer than 24" except miniature varieties.** Subclass by color or cultivar.

*Eligible for the Rose Award*

Class 79. Antique Roses/Old Garden Roses

Class 80. Climbers

Class 81. Floribunda

Class 82. Grandiflora

Class 83. Hybrid Tea

Class 84. Miniatures

Class 85. Polyantha

Class 86. Shrub Roses (including Drift and Knock Out)/

David Austin

(Classes 79-86 may be further divided into:

a. Grown by an individual

b. Grown in a community setting)

### SECTION E. "Let's Go Find a Blooming Tree" ARBOREAL: CUT FLOWERING TREES AND SHRUBS BRANCHES

Cut full branch, not just flowers. **Specimen no less than 12" and no longer than 30"**; for larger specimens, consider entering IIIA2, Arboreal Naturally Large Branches. Note miniatures on card.

*Eligible for an Arboreal Award*

Class 87. *Abutilon pictum* ("Flowering Maple")

Class 88. *Allamanda* spp.

Class 89. *Brugmansia* spp. ("Angel's Trumpet")

Class 90. *Buddleia* ("Butterfly Bush")

Class 91. *Callistemon citrinus* ("Bottlebrush")

Class 92. *Camellia* spp. (other than *C. japonica*)

Class 93. *Cassia fistula* (any other, see *Senna*)

Class 94. *Clerodendrum* (except "Cashmere Bouquet")

Class 95. *Cuphea* spp.

Class 96. *Duranta repens* (syn. *D. erecta*) ("Golden Dewdrop")

Class 97. *Eriobotrya japonica* ("Loquat")

Class 98. *Hamelia patens* ("Firebush")

Class 99. *Hibiscus* spp.

Class 100. *Hydrangea* spp.

Class 101. *Jasminum* spp. (eg "Night Blooming Jasmine")

Class 102. *Lantana camara* (non-seeded varieties only)

Class 103. *Loropetalum chinensis* ("Chinese Fringe tree")

Class 104. *Mandevilla* (syn. *Dipladenia*)

Class 105. *Nerium oleander* ("Oleander")

Class 106. *Odontonema strictum* (Firespike)

Class 107. *Osmanthus fragrans* ("Tea Olive")

Class 108. *Plumbago auriculata*

Class 109. *Rhododendron indica* ("Azalea")

Class 110. *Russelia* spp. ("Firecracker Plant")

Class 111. *Senna* spp.

Class 112. *Serissa foetida*

Class 113. Any other worthy specimen

### SECTION F. "Let's Go Branch Out" ARBOREAL: CUT FOLIAGE BRANCHES

**Specimen no less than 12" and no longer than 30"**; for larger specimens, consider entering IIIA2, Arboreal Naturally Large Branches.

*Eligible for an Arboreal Award*

Class 114. *Acer palmatum* ("Japanese Maple")

Class 115. *Aucuba japonica*-green ("Golddust Plant")

Class 116. *Buxus microphylla* ("Boxwood")

Class 117. *Cedrus* ("Cedar")

Class 118. *Cephalotaxus harringtonia* ("Japanese Plum Yew")

Class 119. *Codiaeum variegatum* ("Croton")

Class 120. *Cupressus sempervirens* ("Italian Cypress")

Class 121. *Eleagnus pungens* ("Silverberry")

'Maculata', 'Marginata', 'Variegata'

Class 122. *Eucalyptus cinerea* ("Silver Dollar Tree")

Class 123. *Euonymus* spp.

Class 124. *Feijoa sellowiana* (syn. *Acca*) ("Pineapple Guava")

Class 125. *Gardenia* spp.

Class 126. *Hibiscus acetosella* ("Redleaf Hibiscus")

Class 127. *Hydrangea* (not fall color)

Class 128. *Ilex* spp. (*Holly*)

Class 129. *Illicium* spp. ("*Anise*")

Class 130. *Juniperus* spp. ("Juniper")

Class 131. *Leucothoe* (syn. *Agarista*) ("Doghobble")

Class 132. *Ligustrum* spp. (not *L. sinensis* or *L. lucidum*)

Class 133. *Loropetalum chinense* 'Plum Delight', 'Burgundy', 'Blush'

Class 134. *Magnolia*

Class 135. *Mahonia* spp.

Class 136. *Nerium oleander* ("Oleander")

Class 137. *Photinia x fraseri* ("Red Tip")

Class 138. *Pittosporum tobira* (green or variegated)

Class 139. *Podocarpus macrophyllus* ("Southern Yew")

Class 140. *Prunus* spp.

Class 141. *Punica granatum* ("Pomegranate")

Class 142. *Raphiolepis indica* ("Indian Hawthorne")

Class 143. *Rosmarinus officinalis* ("Rosemary") (syn. *Salvia rosmarinus*)

Class 144. *Serissa foetida*

Class 145. *Ternstroemia gymnanthera* ("Cleyera")

Class 146. *Ulmus* spp. ("Elm")

Class 147. Any other worthy specimen

### SECTION G. "Let's Go Be Fruitful" ARBOREAL: BERRIED, CONED, or FRUITED BRANCHES

**Specimen no less than 12" and no longer than 30"**.

*Eligible for an Arboreal Award*

Class 148. Berried branches

Class 149. Coned branches

Class 150. Fruited branches

### SECTION H. "Let's Go Grow Food" FRUITS, NUTS, AND VEGETABLES

Suggested number per exhibit based on size:

## DIVISION I - HORTICULTURE

Small =12, Medium =3-5, Large=1

Staged on paper plates provided by the committee.

*Eligible for Award of Merit.*

Class 151. Fruits

Class 152. Nuts

Class 153. Vegetables

**(NOTE: For Sections I, J and K, container-grown plants in classes 164-177 must be a single species grown in a container as a self-multiple or multiple planting of the SAME Cultivar.)**

### SECTION I. "Let's Go Pot Some Posies"

#### CONTAINER-GROWN FLOWERING PLANTS

**Maximum size of container is 12" in diameter and not over 20 lbs. Maximum height of specimen is 36"; must be stable.**

*Eligible for Grower's Choice Award*

Class 154. Orchids

Class 155. *Petunia*

Class 156. Succulents

Class 157. *Tagetes* (Marigold)

Class 158. Any other worthy specimen

(See Note above.)

### SECTION J. "Let's Go Leafy" CONTAINER-GROWN FOLIAGE PLANTS

**Maximum size of container is 12" in diameter and not over 20 lbs. Maximum height of specimen is 36"; must be stable.**

*Eligible for Grower's Choice Award*

Class 159. *Caladium*

Class 160. *Coleus*

Class 161. Ferns

Class 162. Succulents

Class 163. Any other worthy specimen

(See Note above.)

### SECTION K. "Let's Go Hang Out" HANGING BASKETS

**Maximum size of basket is 18" in diameter and not over 20 lbs.**

*Eligible for Grower's Choice Award*

Class 164. Ferns

Class 165. *Hedera* (Ivy)

Class 166. Succulents

Class 167. Any other worthy specimen

(See Note above.)

### COLLECTIONS AND DISPLAYS

Each collection (judged for cultural perfection) and/or display (judged for overall artistic effect) must consist of different cut and/or container-grown specimens exhibited in individual containers or the appearance of being individually exhibited, or specimens, sets of fruits,

vegetables or nuts exhibited on plates, mats, etc.

Specimens may consist of

a. one family;

b. plants with like characteristics;

c. different types or species within a genus;

d. different cultivars within a genus or species;

e. different annuals, biennials, perennials, or sets of fruits, vegetables, or nuts;

f. different cut branches. (HB p. 60)

Each specimen must be identified with current scientific designation, either by chart or individual placards.

**Pre-register Collections and Displays with show chair Deanna Gordon, [dkwgordon@gmail.com](mailto:dkwgordon@gmail.com) or (850)**

**293-1540 by October 1, 2025.**

### SECTION L. "Let's Go Collecting" COLLECTIONS

A COLLECTION is an exhibit of specimens judged for their **cultural perfection**. A collection must consist of a **minimum of 5 specimens**.

*Eligible for the Collector's Showcase Award*

Class 168. Bromeliads

Class 169. Ferns

Class 170. Gingers

Class 171. Any other worthy specimen

### SECTION M. CLUB COMPETITION "Let's Go on Display" DISPLAYS

A DISPLAY is a collection of specimens exhibited with a **strong overall artistic effect**. A display for Club Competition must consist of **7 specimens grown by two or more club members**. Staging materials, provided by the club, including shelves, frames, blocks, background panels, man-made sculptures, underlays, other fresh and/or dried plant material, etc., are permitted, but are used only to enhance plant materials (HB, 60-61).

Displays will be staged on black 24" square cubes placed back-to-back in a square with a 36" black background panel, provided by the committee. Underlay provided by exhibitor is permitted.

*Eligible for the Club Competition Award*

Class 172. Specimens that meet criteria for collections/displays

## **DIVISION II – DESIGN**

### **DIVISION II – DESIGN**

#### **DESIGN RULES**

1. **All entries received 7:00 – 10:30 a.m. Wednesday, October 15**
  - a. ONLY exhibitors and show committee will be allowed in the show area at this time.
  - b. **RESERVATIONS are necessary** for all design classes. To make a reservation, contact Gina Jogan, [gvjogan@panhandle.rr.com](mailto:gvjogan@panhandle.rr.com) (preferred) or 850-324-9783.
  - c. Design classes consist of four (4) entries each.
  - d. Exhibitor is limited to one (1) entry per class but may enter as many classes as desired.
  - e. Entry cards will be filled out and placed by the Reservation Chairman.
  - f. All entries **MUST BE THE WORK OF ONE EXHIBITOR** (exception: Club Competition exhibits or Companion Exhibits) and must be verified for conformance by the Design Conformance Committee **BEFORE** the exhibitor leaves the floor.
  - g. Exhibitors are invited to freshen their exhibits as necessary throughout the show. Access to the building through the back door will be possible on Tuesday, October 21, from 10 am -12 pm, or by special arrangement with show chair. Alternatively, Designers may leave fresh flowers under the table to be used as needed. If fresh plant material becomes unsightly and the Designer has made no arrangements to supply more, the Committee will simply remove it.
  - h. If Designer is unable to fulfill her/his assignment, it is Designer's responsibility to find a replacement.
  - i. If Designer cannot place design on show day, someone else may put completed design in place, using photo as a guide.
  - j. Designer is on her/his honor that the design being entered has not been previously entered or previously judged in an NGC show.
  - k. The Designer has the freedom to choose Traditional or Creative Style with any Design listed unless restricted by the Schedule.
2. **Plant Material**
  - a. All designs must contain some plant material.
  - b. Plant material need not be grown by the exhibitor (unless schedule requires it in specific section/s or classes).
  - c. Plant material must be listed with **botanically correct** name on a 3" x 5" card provided by the exhibitor. Classification will assist with naming of plant material upon request.
  - d. Fresh plant material may not ever be treated in any manner. Dried plant material may be treated.
  - e. Contrived plant material, a new form constructed of fresh and/or dried plant material as an obvious "fantasy flower, foliage, and/or stem" (HB p. 80), is permitted.
  - f. Landscapes or scenes are not permitted.
3. **Judging will begin at 1:00 p.m. on Wednesday, October 15.**
  - a. Blue or 90+ ribbon winner's entry card **MUST BE SIGNED BY AN ACCREDITED JUDGE**. Second-, third-, and fourth-place entries need not be signed. Entries **NOT PLACED** (not being awarded any ribbon) **MUST BE INITIALED** to indicate they have been seen by the judging panel.
  - b. Judges will write comments for all entries (except blue ribbon winners) on the back of the plant material card.

## DIVISION II – DESIGN

- c. The decision of the judges shall be final. Top awards will be determined by the designated panel of judges who judge in that section. Awards may be withheld if not merited.
- d. Exhibitors will not be allowed on the floor while judging is in progress.
4. **Removal of entries will begin at 8:00 a.m. on Sunday, October 26.** The Staging Committee will remove all entries not picked up by 10:00 a.m. and move them to a safe place so clean up can continue.
5. **Protection of all exhibits** will be carried out as much as possible; however, the show committee cannot be responsible for loss or damage to the exhibitor's property.
6. When a **staging panel** is required in the schedule, it **MUST** be provided by the designer and meet specifications as listed unless otherwise noted.

### SCALE OF POINTS FOR JUDGING DESIGNS (HB p. 130)

<b>Conformance to Design Type</b>	7
<b>Conformance to all other schedule requirements</b>	7
<b>Design</b> (Elements and Principles)	48
<b>Selection of Components</b>	8
<b>Organization of Components</b>	8
<b>Expression</b> (Interpretation of class by exhibitor)	8
<b>Distinction</b> (Marked superiority in technique and craftsmanship)	14
<b>Total</b>	100

## “Let’s Go Traveling”

*All Reservations Gina Jogan – [gyjogan@panhandle.rr.com](mailto:gyjogan@panhandle.rr.com) (preferred) or 850-324-9783*

### SECTION A. “Let’s Go by Car”

The committee will provide simple L-fold staging panels consisting of folded posterboard of the designated size and color, with the horizontal half flat on the surface upon which the design will be placed, and the vertical half supported to stay upright behind the design.

*Eligible for Petite Award*

#### Class 1. “Roadside Scenery”

A 5” Transparency Design (HB p. 77), placed on an L-fold staging panel of royal blue, 7” x 7” base and 7” x 7” back, elevated on an acrylic riser measuring 12” in diameter and 12” high, provided by the committee, placed on a 30”H table draped in black.

#### Class 2. “Auto Parts”

An 8” Creative Design (HB p. 74) using one or more car part, actual or miniature, placed on an L-fold staging panel of light yellow, 10” x 10” base and 10” x 10” back, elevated on a 15” high wooden pedestal with a 12” square top, provided by the committee, placed on a 30” high table draped in black.

#### Class 3. “Road Trip”

A 12” Creative Line Design (HB p. 74), placed on a black L-fold staging panel, 14” x 14” base and 14” x 14” back, provided by the committee, staged at eye level and placed on a 30” high table draped in black.



## **DIVISION II – DESIGN**

### **SECTION B. “Let’s Go by Plane”**

Designer has choice of plant material and other components. If fresh plant material is used, it must be replaced if wilted before the show closes, or the committee will remove it.

*Eligible for Designer’s Choice Award*

#### **Class 4. “A Bumpy Flight”**

A Multi-Rhythmic Creative Design (HB p. 75). Frame of reference is 36” H x 36” W x 24” D on a 30” H table draped in black. A 36” H trifold niche, provided by Designer, is required. Underlay provided by Designer is permitted.

#### **Class 5. “Row 20 Seats D, E, and F”**

A Parallel Design (HB p. 75) staged in front of a 16” H x 18” W x 18” D white trifold niche with scalloped edges, with white underlay, provided by committee, on a surface elevated to 45” H, draped in black.

#### **Class 6. “Going Through Security (What’s in Your Luggage?)**

A Still Life Design (HB p. 76) in a frame of reference 36” H x 24” W x 24” D on a 30” H table draped in black. A 36” H x 24” W flat, two-dimensional staging panel, provided by Designer, is required. Underlay provided by Designer is permitted.

### **SECTION C. “Let’s Go Eat”**

*Eligible for Table Artistry Award*

Designer has choice of plant material. If fresh plant material is used, it must be replaced by exhibitor if wilted before the show ends or the committee will remove it.

#### **Class 7. “Let’s Go Traveling Solo to a Far-Away Location”**

A Functional Table for one staged on a 20” round bistro table 25-1/2” high. Location must be specified on the Designer’s card accompanying the design. Table will be provided by the committee; contact show chair (dkwgordon@gmail.com, 850-293-1540) to obtain. Required tablecloth, to be provided by the Designer, must drape to the floor.

#### **Class 8. “Let’s Go to the Train Dining Car”**

A Functional Table for Two (HB p. 76), staged on a 36” square card table x 30”H, staged against the wall to suggest a train booth, provided and draped in black by the committee. Designer may over-drape 8” to 12” if desired; over-drape provided by Designer.

#### **Class 9. “Let’s Go on a Picnic”**

An Exhibition Table (HB p. 76) that must incorporate a picnic basket or cooler, provided by Designer, staged on a 30” H x 30” square table, draped in black and provided by the committee, placed midfloor and seen from all sides but to be judged from the front. Underlay provided by Designer is permitted. No staging panel is permitted.

## DIVISION III – BOTANICAL ARTS

### DIVISION III – BOTANICAL ARTS

#### BOTANICAL ARTS GENERAL RULES

1. All Botanical Arts Horticulture, Design, and Artistic Crafts exhibits must contain some plant material.
2. No artificial plant material is permitted in any exhibit.
3. The Scales of Points for judging Botanical Arts Horticulture, Design, Artistic Crafts, and Photography are listed in Chapters 11 and 14 of the *Handbook for Flower Shows*.

#### BOTANICAL ARTS HORTICULTURE (HB p. 91-92)

1. All specimens must be preserved by exhibitor. Purchased specimens are prohibited.
2. All entries must be checked by Classification Committee and conform to the schedule regulations. All entries are to be labeled by genus and specific epithet and/or variety or trademarked names.
3. May use hairspray or products such as *Super Surface Sealer* to prevent shattering of fragile seed heads, etc. No other embellishments permitted.
4. Judged by **Horticulture Scale of Points** (schedule p. 5).

#### BOTANICAL ARTS DESIGN (HB pp. 93-94)

1. **Reservations must be made for entries in Botanical Arts Design.** Pre-register with Gina Jogan, [gvjogan@panhandle.rr.com](mailto:gvjogan@panhandle.rr.com) (preferred) or 850-324-9783.
2. **Design Rules** (schedule pp. 12-13) apply to Botanical Arts Design.
3. Judged by **Design Scale of Points** (schedule p. 13).

#### RULES FOR BOTANICAL ARTS ARTISTIC CRAFTS (HB pp. 94-95)

1. **Reservations must be made for entries in Botanical Arts Artistic Crafts.** Pre-register with Gina Jogan, [gvjogan@panhandle.rr.com](mailto:gvjogan@panhandle.rr.com) (preferred) or 850-324-9783.
2. Exhibit must contain some fresh and/or dried plant material. Only dried material may be treated.
3. A card listing plant material by genus and specific epithet must be included.
4. Judged by the **Artistic Crafts Scale of Points**:

<b>Conformance</b>	25
<b>Design</b>	30
<b>Craftsmanship/Technique</b>	25
<b>Distinction</b>	20
<b>Total</b>	100

### “Let’s Go Creative”

#### SECTION A. Botanical Arts Horticulture “Let’s Go Out in Nature”

*Eligible for Botanical Arts Horticulture Award*

##### Class 1. Arboreal Fall Color (HB p. 91) “Let’s Go Look for Fall Foliage”

Trees and shrubs with recognized natural fall color interest; the majority of leaves should be firmly attached. Cut specimens may not exceed 30”. Staged in clear containers provided by committee on a table draped in black.

- a. *Acer* spp. (Maples)

## **DIVISION III – BOTANICAL ARTS**

- b. *Hydrangea* spp.
- c. *Quercus* spp. (Oaks)
- d. Any other worthy specimen

### **Class 2. Arboreal Naturally Large Branches (HB p. 91) “Let’s Go Big”**

Specimens which do not show the beauty of mature form within the 30” limit allowed for normal specimens. Limited to 31”- 48” long by 24” wide. Staged on a table draped in black. Exhibitor to provide attractive, sturdy, clear container or other necessary staging.

- a. Branches from Shrubs
- b. Branches from Trees

### **Class 3. Dried and Preserved Specimens (HB p. 92) “Let’s Go for the Long Term”**

Entries exhibited on paper plates, in document sleeve, or in suitable container provided by exhibitor or committee.

- a. Cones
  - (1) Cycad cones (1 required/state male or female)
  - (2) Pine cones (1 large, 2-3 medium, or 4-10 small of same)
- b. Flowers (1 large, 2-3 medium, 4-10 small of same)
- c. Foliage (1 large, 2-3 medium, 4-10 small of same)
- d. Gourds (1 large, 2 medium, or 3 small of same)
- e. Seed pods/heads (1 large, 2-3 medium, or 4-10 small of same)

## **SECTION B. Botanical Arts Design “Let’s Go Out on a Limb”**

*Eligible for Botanical Arts Design Award*

### **Class 4. “Let’s Go Exploring”**

A Collage (HB p. 93), an abstract design on an 11” x 14” panel with a dominance of components attached in a non-realistic arrangement that expresses the theme of traveling for discovery or adventure. Collages will be displayed on acrylic book stands provided by committee and placed on a 10” H x 14” W x 12” D section of riser.

### **Class 5. “Let’s Go Non-Pedestrian”**

A Mobile (HB p. 93), a hanging collection of items that assist humans to move through the environment in a manner other than by walking (wheels, wings, propellers, skis, etc.), suspended and freely moving in 44” black iron footed hoop, provided by committee, placed on 30” H table draped in black. Hoops in which exhibitors will attach their mobiles for display will be in place at the show.

### **Class 6. “Let’s Go Wild”**

An Exploration—Freedom of Style Design (HB p. 94) staged on a 36” W x 30” D section of a 30” H table draped in black in front of a beige concrete block wall.

## **DIVISION III – BOTANICAL ARTS**

### **SECTION C. Botanical Arts Artistic Crafts “Let’s Go Crafty”**

*Eligible for Botanical Arts Artistic Crafts Award*

#### **Class 7. “Let’s Go to the Prom”**

A wrist corsage. Wristlet will be provided by the committee; contact show chair ([dkwgordon@gmail.com](mailto:dkwgordon@gmail.com), 850-293-1540) to obtain. Corsages will be displayed on a cut section of black pipe provided by the committee and placed on a 10” H x 12” W x 12” D section of riser.

#### **Class 8. “Let’s Go Out in the Sun”**

A decorated straw sun hat provided by the committee; contact show chair ([dkwgordon@gmail.com](mailto:dkwgordon@gmail.com), 850-293-1540) to obtain. Hats will be displayed on a standing section of wide-diameter black pipe provided by the committee and placed on a 10” H x 14” W x 12” D section of riser.

#### **Class 9. “Let’s Go Back in Our Memories”**

A decorated photo album no smaller than 5” x 7” and no larger than 8.5” x 11” provided by exhibitor, displayed on an acrylic book stand provided by committee and placed on a 10” H x 14” W x 12” D section of riser.

## **DIVISION IV – EDUCATION**

### **DIVISION IV – EDUCATION** **(Non-competitive)**

#### **“Let’s Go Do Something Different”**

##### **RULES**

1. Entries may be placed beginning at 9:00 AM on Tuesday, October 14 or by arrangement with the flower show chair and **MUST** be completed by 10:30 AM on Wednesday, October 15. Removal begins at 8:00 AM on Sunday, October 26. If your exhibit is not removed by 10:00 AM, the committee will move it to a safe place so that clean-up can be completed.
2. Each exhibit must use a minimum of 18 square feet of surface area, horizontal, vertical, or combination; they will be staged on half of an 8’ L x 30” D x 30” H table draped in black.
3. Exhibits will not be judged.

##### **Exhibit 1. “Let’s Go Gardening”**

An exhibit encouraging joining the Pensacola Federation of Garden Clubs

##### **Exhibit 2. “Let’s Go Tropical”**

An exhibit displaying the interests and opportunities of the Hibiscus Society

##### **Exhibit 3. “Let’s Go Learn to Make Seasonal Arrangements”**

An exhibit advertising PFGC’s “Fun with Flowers” series

##### **Exhibit 4. “Let’s Go Find Out ‘What’s Your Type?’”**

An exhibit advertising the Florida Flower Show Judges’ Council design tutorial handbook, expanding with a new insert every year

##### **Exhibit 5. “Let’s Go to the FFSJC District 1 Design Gala”**

An exhibit describing the upcoming event

##### **Exhibit 6. “Let’s Share Our Enthusiasms”**

Exhibits solicited for other special interests. Garden club members from throughout the area are urged to contact show chair ([dkwgordon@gmail.com](mailto:dkwgordon@gmail.com), 850-293-1540) to discuss possible contributions. What do you enjoy along with garden club? Pickleball? Quilting? Local history? Think about the opportunity to reach fairgoers to expand their horizons with your special activities! Channel your inner Science or History Fair participant and decorate a backboard or arrange items to interest the public. Displays will be placed on half of an 8’ L x 30” D x 30” H table draped in black.

# **EXPRESSION OF APPRECIATION**

**to**

**District 1 Council**

**of Florida Flower Show Judges**

Two essential components of any flower show are competitors and judges. Particularly in the Design Division, competitors are necessarily highly trained in the principles and techniques of floral design and are therefore members of an elite and limited group. The Flower Show Committee is keenly cognizant that this show relies heavily on the District 1 Council of Florida Flower Show Judges, whose members make up most of the competitors in the Design Division and many of the judges for the show (and several committee members whose endless efforts produce the show). We couldn't do it without you! Thank you!